

HLxx Light Datalogger Support Software

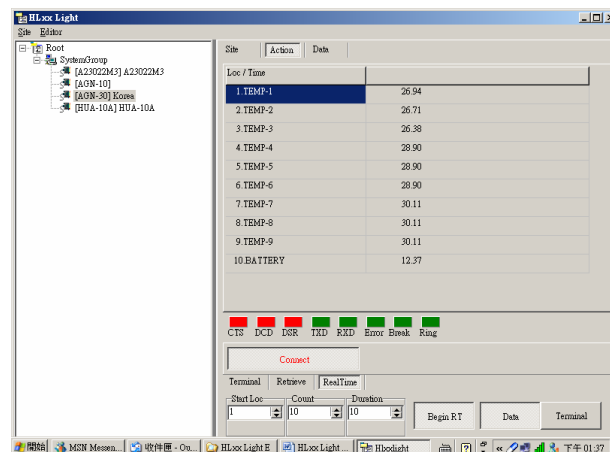
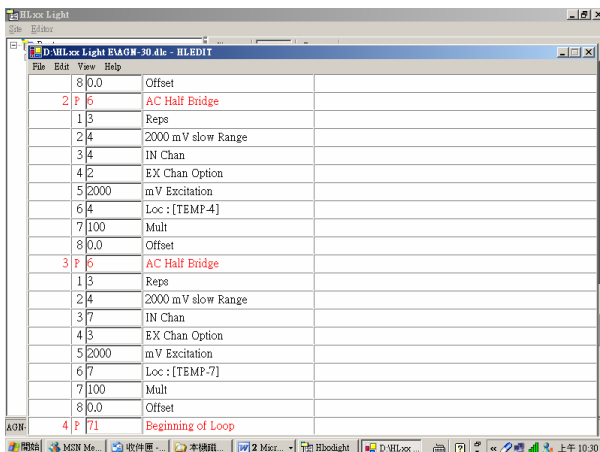
HLxx Light datalogger support software is a complete Windows® environmental software for data collection and monitoring, etc. HLxx Light Software is a very simple software, which is used to work with HL20 or HL10 datalogger series as well as the external EESM512 storage module. The HLxx Light software can help enable each of operators to familiarize all of its operation mode very shortly.

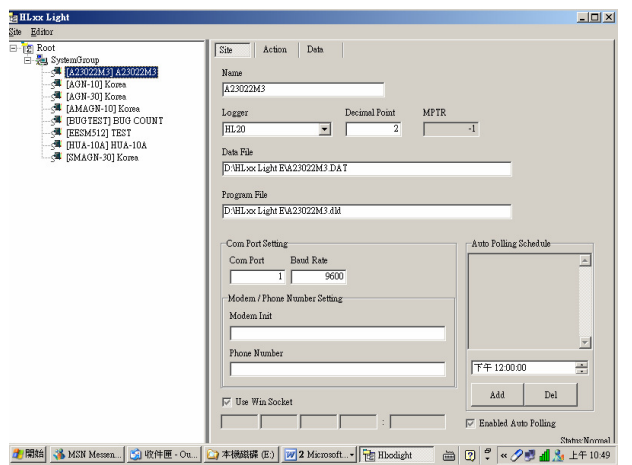
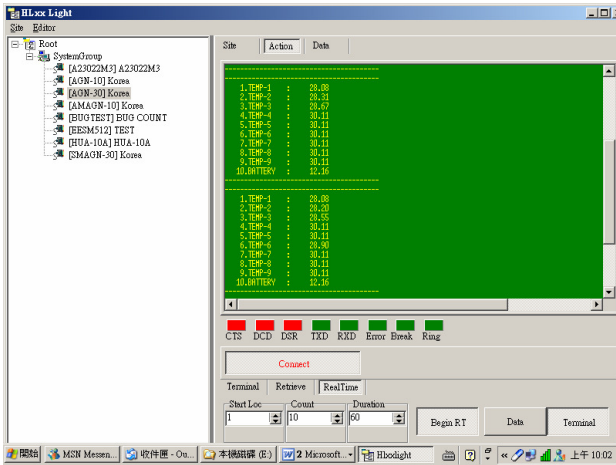
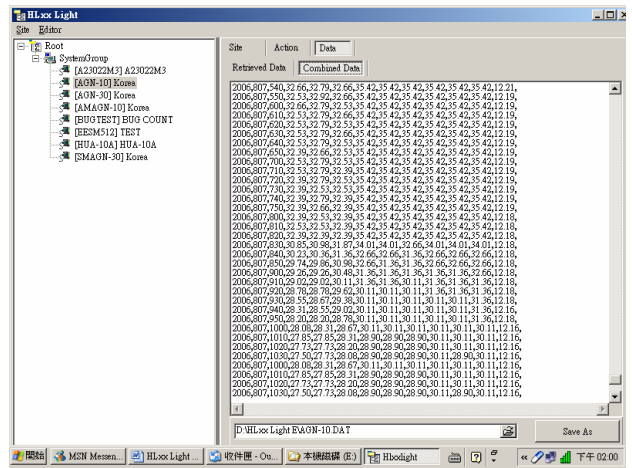
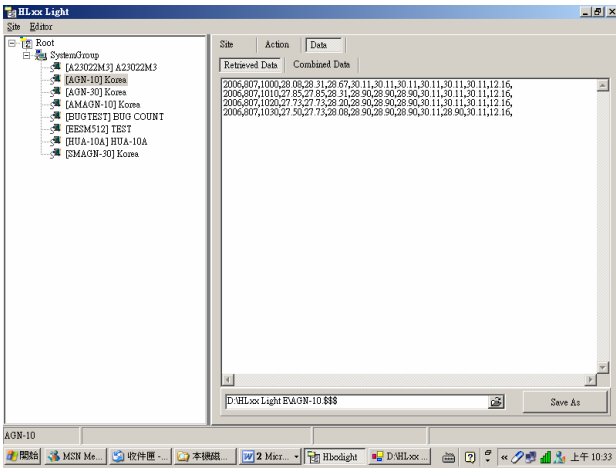
Features:

- Program Editor
- Real Time Monitor Mode
- Terminal emulator
- On-line new & history data view
- Communication supports
- Simple operation mode

HLxx Light software can allow each of operators to edit a new program or re-edit one or more existing program files by themselves, which is unlike other version of software with a little bit more in its re-assignment of allocations and set-up procedures, etc. Each of operators can easily revise the scan rate and internal instruction commands and recording interval by themselves. The main features of HLxx Light software includes: a. Program Editor b. Real Time Monitor Mode – display all of user’s pre-set locations. c. Terminal emulator – on-line data output based on selected scan rate on screen d. On-line new & history data view – new collected data and history data can be viewed on the same screen without skipping the current window screen, without searching for certain directory for the raw data file, it’s quite helpful in checking and verifying all of new collected and old history data in few seconds.

The data in remote dataloggers can be retrieved back to centrally located PC with HLxx Light Software, through a variety of communication architecture which including direct connection, dedicated line, IP controller, dial-up modem or GSM modem or CDMA modem, etc. If the phone lines to some remote sites are not available, the data in EESM512 solid state storage module that supplement the internal data storage capacity of datalogger can be brought back into central PC. Alternatively, HLxx Light software can be operated on a notebook PC, and the operator takes the notebook PC out to each remote site and retrieve data back from each dataloggers.





Minimum Hardware Requirement:

- Pentium 300MHZ or above with Windows[®] 2000 or XP Windows[®]
- 64M RAM or above
- 2G Hard Disk Space or above
- CD-ROM or DVD-ROM bay
- Super VGA (800 x 600) Monitor or above
- RS232 or USB Port
- Printer Port and Printer
- Keyboard and Mouse or Other Pointing Device