

HLxxWIN Datalogger Support Software

HLxxWIN datalogger support software is a complete Windows® environmental software for data collection and monitoring, etc. HLxxWIN datalogger support software is a very simple software, which is used to work with HL20 or HL10 datalogger series as well as its external peripherals. The HLxxWIN datalogger support software can help enable each of operators to familiarize all of its operation mode very shortly.

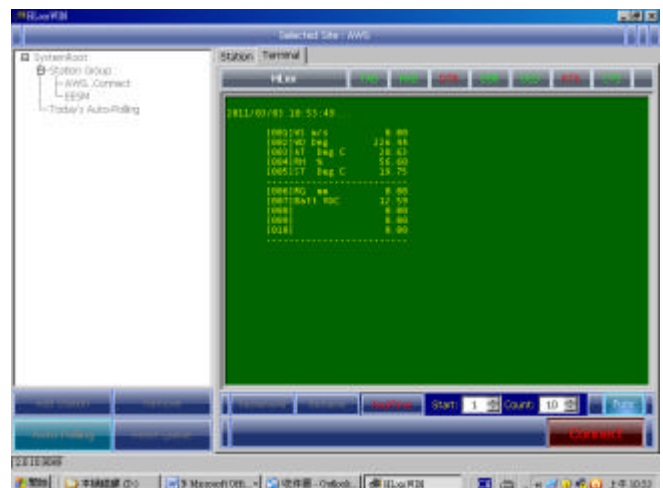
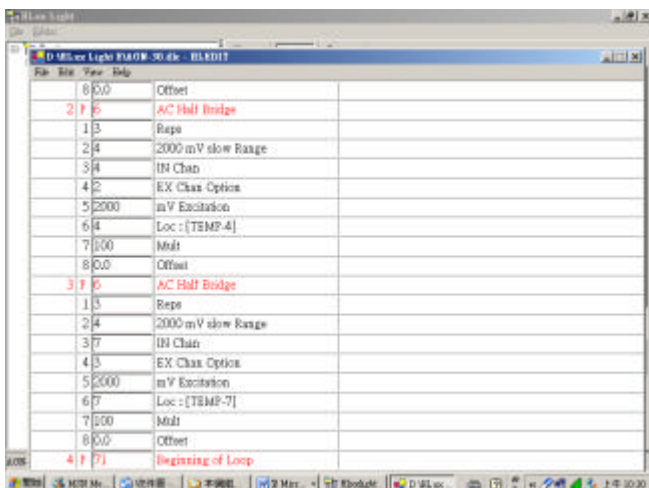
Features:

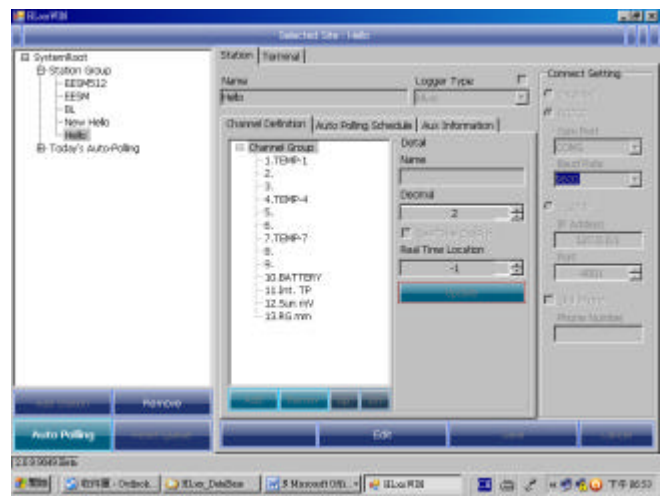
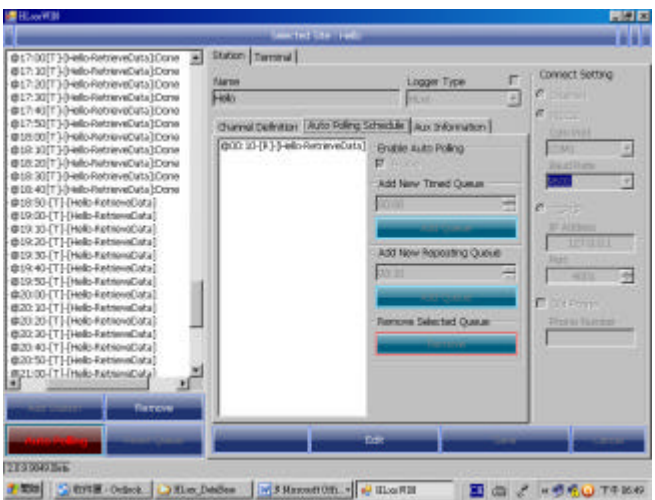
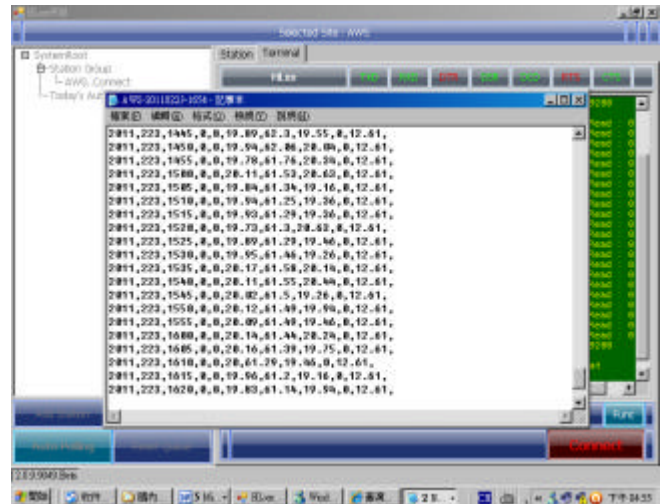
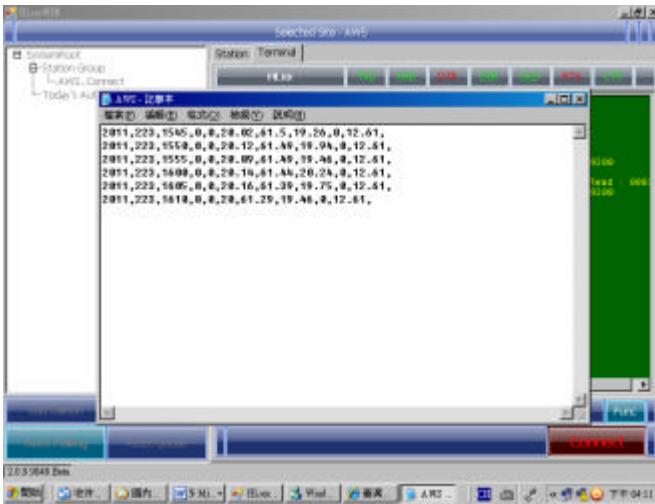
- Program Editor
- Real Time Monitor Mode
- Terminal emulator
- Auto-polling for multiple remote stations
- Communication supports
- Simple operation mode

HLxxWIN software can allow each of operators to edit a new program or re-edit one or more existing program files by themselves, which is unlike other version of software with a little bit more in its re-assignment of allocations and set-up procedures, etc. Each operators can easily revise the scan rate and internal instruction commands and recording interval by program editor by themselves. The main features of HLxxWIN software includes:

- Program Editor
- Real Time Monitor Mode – allow operator to adjust display locations on line.
- Terminal Mode – real time data output or recorded time interval data output.
- Data Retrieval – new collected data (Retrieve) and all collected data (RetrieveAll) can be viewed on line after data retrieval.
- Auto-Polling – allow operator to set up multiple time schedules in hour(s) or minute(s) for multiple remote stations for auto data retrieval, specified timed queue or repeating queue can be set.

The data in remote dataloggers can be retrieved back to centrally located PC with HLxxWIN software manually or automatically, through a variety of communication architecture which including direct connection, dedicated line, IP controller, dial-up modem or GSM modem or GPRS module as well as other wired or wireless communication devices, etc.





Minimum Hardware Requirement:

- Intel Pentium Dual Core 2.0GHZ or above
- Windows® XP, VISTA or Windows® 7
- 2 GB RAM or above
- 320 GB Hard Disk Space or above
- DVD-ROM bay
- 19" Monitor or above
- RS232 or USB Port
- Printer Port and Printer
- Keyboard and Mouse or other compatible device